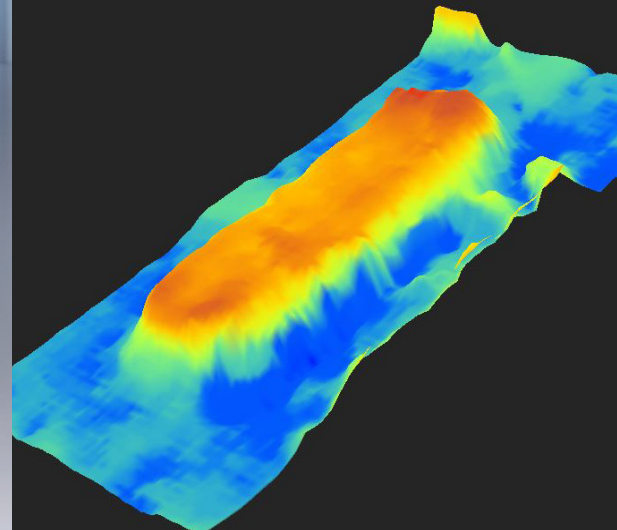




Solder Paste Inspection System (SPI) for In-Line Manufacturing



iS6052 SPI

Economical technology for reliable solder and
sinter paste inspection

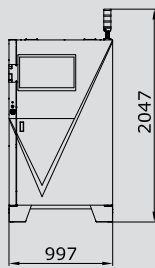
3D SPI



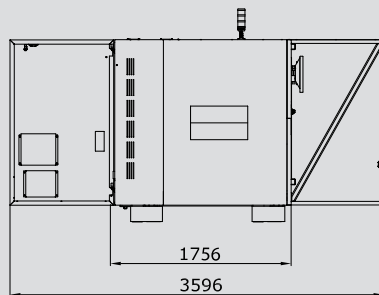
Technical Specifications

iS6052 SPI

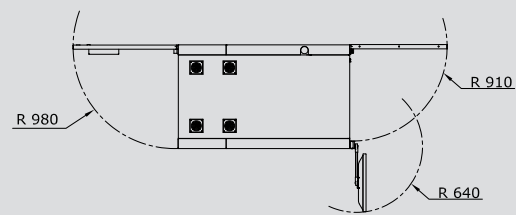
Front view



Side view



Top view



Dimensions in mm

| | | iS6052 SPI |
|--------------------------|-----------------------------|---|
| Inspection Scope | | Solder paste deposits (stencil printing or dispensing technology, up to pad sizes for 01005 components); sinter paste, adhesives, surface, height, print displacement, smearing, shape, coplanarity, open area analysis, OCR, DMC |
| Camera technology | | XMe-SPI |
| | 3D Sensor Technology | |
| | Z-resolution | 0,1 µm |
| | Z-range | Up to 5mm |
| | Angled view cameras | |
| | Number of megapixel cameras | 4 |
| | Orthogonal camera | |
| Resolution | 12 µm | |
| Field of view | 58 mm x 58 mm (2.2" x 2.2") | |
| Inspection Speed | | Up to 80 cm ² /s |
| Software | User interface | Viscom vVision |
| | Statistical process control | Viscom vSPC/SPC, open interface (optional) |
| | Verification station | Viscom vVerify |
| | Remote diagnosis | Viscom SRC (optional) |
| | Programming station | Viscom PST34 (optional) |
| System computer | Operating system | Windows® |
| | Processor | Intel®Core™i7 |
| PCB handling | PCB dimensions | 508 mm x 508 mm (20" x 20"), Longboard option available for circuit boards up to 720 mm (28.3") in length* |
| | PCB support | Optional |
| | Transport height | 900 – 950 mm ± 20 mm (35.4" – 37.4" ± 0.7") |
| | Width adjustment | Automatic |
| | Transport concept | Single-track transport system, dual-lane option available |
| | PCB clamping | Pneumatic |
| | Upper transport clearance | 50 mm (1.9") |
| | Lower transport clearance | 50 mm (1.9"); 40 mm (1.5") with PCB support |
| Other system data | Positioning unit | Synchronous linear motor |
| | Interfaces | SMEMA, Hermes |
| | Power requirements | 230/400 V, 50 Hz, 3P/N/PE +/- 10%; 4 – 6 bar working pressure |
| | System dimensions | 997 mm x 1756 mm x 1753 mm (39.2" x 69.1" x 69") (W x D x H) |
| | Weight | Approx. 820 – 920 kg (1807.7 – 2028.2 lbs) |

Specifications and other system information are subject to change without notice and may differ from the information displayed at the time of ordering.

* depends on the individual configuration. Please contact us.