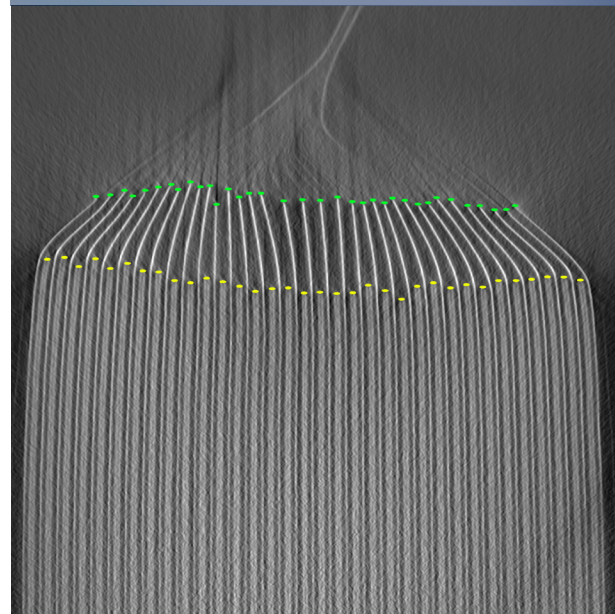




High-Precision  
Batch Inspection



## **iXCell iCT Byline**

Next-Level Inspection for Evolving Manufacturing Needs

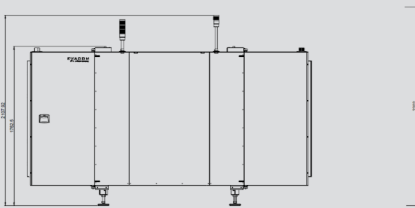


# Technical Specification iXCell iCT Byline

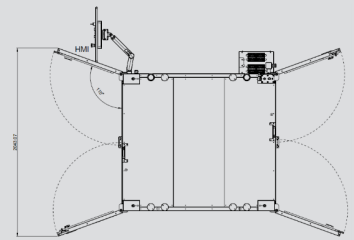
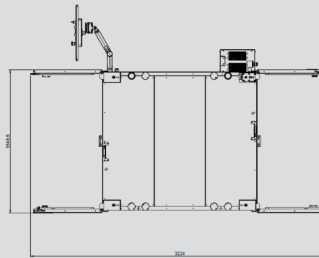
The Exacom iXCELL iCT system is a unique inspection platform designed for offline, byline, at-line, and pilot-line applications. The system supports manual loading of complete batches and performs fully automated, customizable inspection routines on all units in the batch.

With significantly higher throughput compared to conventional of-line solutions, the iXCELL iCT system enables rapid quality checks, data acquisition and analysis, supporting faster process optimization and improved visibility in production environments.

Side view



Top view



Specifications in mm

		iXCell iCT Byline		
<b>System Data</b>	Type	iXCell		
	Name	iCT Byline		
	Application Types	General: Weld Inspection, void Inspection, custom applications Lithium Battery inspection: Stacked Prismatic Cells / Stacked Pouch Cells		
	Inspection Type	3D CT + 2D X-Ray inspection		
	System Throughput	~ 2 PPM	Depending on work piece dimensions	
<b>X-Ray System</b>	Tube Voltage	130 kV / 180 kV		
	Tube Current	up to 300 $\mu$ A / 500 $\mu$ A		
	Tube Power	39 W / 90 W		
	Detector	3008 x 2496 Pixel up to 40 fps Read Out	High resolution, high framerate detector	
	Geometric Resolution	< 15 $\mu$ m/Pixel		
<b>Metrology Certifications</b>	MSA 1	$C_{gk} > 1.33$	for 1000 $\mu$ m criteria tolerances	
	MSA 3	GRR < 10 %	GRR < 10 % on average, < 15% on max value, for 1000 $\mu$ m tolerance	
	VDA 5	Certified	VDA5 acceptance criteria for 1000 $\mu$ m tolerance	
	Calibration	Yes	DAKKS certified calibration artefact	
	Acceptance	Yes	Long term stable DAKKS certified acceptance artefact	
<b>Other system data</b>	Dimensions	1765 mm x 1746 mm x 2108 mm without HMI Screen (W x H x D)		
	Weight	Ca. 3200 kg		
	Power requirements	400 V / 16 A		
	Compressed Air	Optional, 6 – 8 bar, 30 Nm <sup>3</sup> /h		
	Network	Optional, 10G Ethernet to MES		
	Electrical Cabinet	External electrical cabinet (up to 10 m distance)		
	X-Ray Cabinet	Radiation leakage rate < 1 $\mu$ Sv/h		
	Certification	CE compliance standard, UL and other on request		

Specifications and other system information are subject to change without notice and may differ from the information displayed at the time of ordering.