

## S3088 *basic*

**Full Viscom  
high-end compatible  
inspection capabilities**

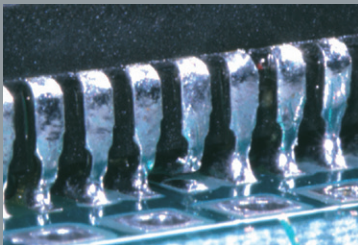
**Cost-effective  
machine design**

**Fast program creation  
with either  
vVision or EasyPro**

**Full color evaluation**

**IPC ready inspection**

**Easy control of escapes  
and false calls**



# AOI



- Pre- and post reflow AOI
- Economical price
- High-end inspection capabilities

The Viscom S3088 *basic* provides full 2.5D defect detection coverage for placement and solder joint inspection – including angular view cameras and OnDemand-HR technology.

Nevertheless, the S3088 *basic*'s plug-and-play concept is a perfect fit for OEMs and EMS providers who desire an "out of the box" system which can give them optimal performance at a surprisingly low price. Customers who require specialized software or hardware configurations can opt for Viscom's S3088 *flex* or S6056 models.

Programming and program optimization are based on the vVision software. This intuitive and flexible tool gives all library options for IPC-compatible inspection with low false calls and minimal escapes. Even beginners can achieve good results almost instantly.

All inspection programs can be transferred from one central location to any other Viscom system. All of Viscom's standard software tools, such as verification station, offline programming and SPC, are optional.

# Technical Specifications

## S3088 *basic*

### Application

Placement and solder joint inspection (reflow and wave soldering)

### Camera technology

#### Orthogonal camera module 8M (white LEDs)

Field of view	576 mm x 43.5 mm (2.3" x 1.7")
Resolution	23.5 µm (standard), 11.75 µm (high) switchable with OnDemandHR
Number of megapixel cameras	4

#### Angular view camera module 8M (white LEDs)

Resolution	16.1 µm (standard), 8 µm (high) switchable with OnDemandHR
Number of megapixel cameras	4

### Software

User interface	Viscom vVision/EasyPro
SPC	Viscom SPC (statistical process control), open interface (optional)
Verification station	Viscom vVerify/HARAN
Remote diagnosis	Viscom SRC (software remote control) (optional)
Programming station	Viscom PST34 (optional)

### System computer

Operating system	Windows®
Processor	Intel® Core™ i7

### PCB handling

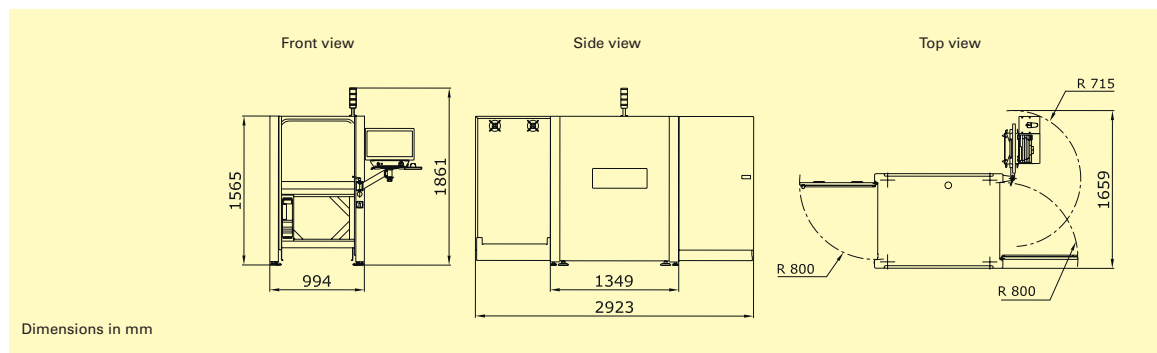
PCB dimensions	508 mm x 508 mm (20" x 20")
Transport height	900 - 950 mm ± 20 mm (35.4" - 37.4" ± 0.8")
Width adjustment	Automatic
Transport concept	Single track transport
PCB clamping	Pneumatic
Upper transport clearance	35 mm (1.4")
Lower transport clearance	Up to 60 mm (2.4")

### Inspection speed

20 - 40 cm<sup>2</sup>/s

### Other system data

Positioning/handling unit	Synchronous linear motors
Interfaces	SMEMA
Power requirements	230 V (other voltages on request), 1P/N/PE, 10 A
System dimensions	994 mm x 1565 mm x 1349 mm (39.1" x 61.6" x 53.1") (W x H x D)
Weight	600 kg (1323 lbs)



#### Headquarters:

**Viscom AG**  
 Carl-Buderus-Straße 9 - 15 · 30455 Hanover · Germany  
 Tel.: +49 511 94996-0 · Fax: +49 511 94996-900  
 info@viscom.com · www.viscom.com

Visit our website to find international subsidiaries and representatives in Europe, USA and Asia:

[www.viscom.com](http://www.viscom.com)